



Justrite Safety Group

Dry Areas - Medium Duty Rubber Foam Mats

425 Posture Mat™



Dry Areas - Medium duty

425 Posture Mat™

Exceptionally soft and comfortable anti-fatigue mats for standing workers in primarily static positions with limited lateral movement making it ideal for sit-stand desks and individual standing workstations. The rebound of the foam results in an energizing bounce effect that stimulates automatic balance checks to improve posture and constant micro movements to maintain blood flow.

Made from a durable closed cell foam that is reputed for its ultimate comfort and longevity properties, the naturally resilient material moulds to the foot to spread weight and reduce pressure points from the hard floor underneath. All four sides have bevelled edges to minimize tripping hazards. Loose lay with no installation required.

Recommended use:

- Medium duty
- Ideal for stationary standing workstations, sit-stand desks, packing stations, office environments, reception areas, wait stations, service counters, cashiers

Specifications:

- Durable closed cell foam blend rubberized sponge
- Bevelled edges on all sides
- Overall thickness: 19 mm
- Weight: 5.8 kg/m²
- Special characteristics: Free of DOP, free of DMF, free of ozone depleting substances, free of silicone and free of heavy metals
- Resistant to most industrial fluids and chemicals

Standard sizes:

- 51 cm x 60 cm
- 60 cm x 177 cm
- 91 cm x 102 cm
- 91 cm x 152 cm

Colours:

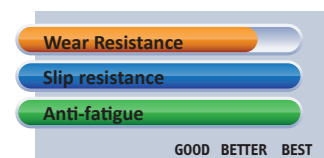
- Black

Cleaning instructions:

- Daily sweeping with a brush

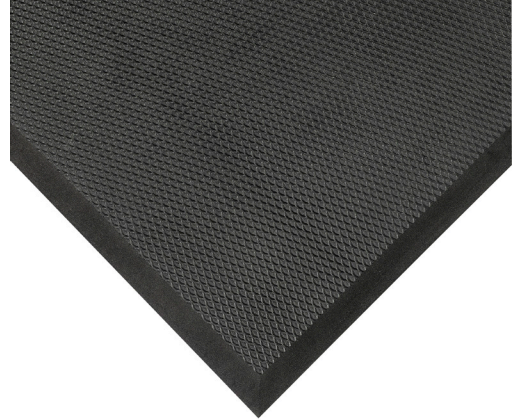


PRODUCT TESTING



425 Posture Mat™ (black)

Art. nr.	Dimensions	Weight kg
425S2024BL	51 cm x 60 cm	1
425S2472BL	60 cm x 177 cm	3,7
425S3640BL	91 cm x 102 cm	3,1
425S3660BL	91 cm x 152 cm	4,6



425 Posture Mat™

GENERAL DESCRIPTION

Designation	Ergonomic, Anti-fatigue Safety Matting
Type	Dry Areas - Standalone Rubber Mats
Description	Exceptionally soft and comfortable anti-fatigue mats for standing workers in primarily static positions.
Surface	Textured grip pattern
Category	Ergonomic, Anti-fatigue Safety Matting
Recommended use	Dry Areas Medium duty
Colours	Black
Edges	Bevelled edges on all sides

TECHNICAL SPECIFICATIONS

Material	Durable closed cell foam blend rubberized sponge
Process	Foaming
Total weight	5.8 kg/m ²
Overall thickness	19 mm

DIMENSIONS

Standard sizes	Full rolls	Custom lengths
51 cm x 60 cm		
60 cm x 177 cm		
91 cm x 102 cm		
91 cm x 152 cm		