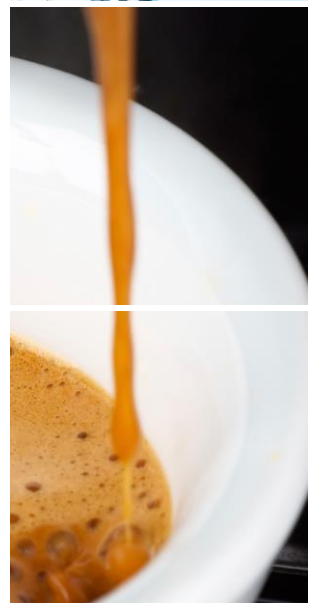


Nio 20.2 [a] CoEx® bean2cup



reddot award 2014
winner



Key features

- Visible beans & ingredient canisters
- CoEx® brewer & 2 whole bean grinder
- 10.4" high res full color touch screen
- Keyless cleaning & operation
- Aluminium housing
- Illuminated ingredient canisters
- Separate hot water outlet

Options

- Branding and/or customized colors
- On-screen communication options
- ConnectMe® [online monitoring]
- Base cabinet [with condiment trays]
- Increased capacities
- Waste guide & drain
- Table between base and machine

Nio 20.2 [a] CoEx® bean2cup



Dimensions

	mm
Machine	h 599
	w 460
	d 540
Base Cabinet	h 850
	w 460
	d 540
Weight	35 kg

Selections

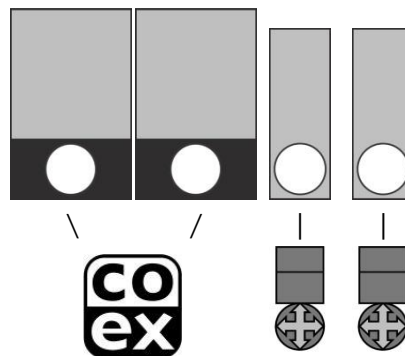
Whole Bean Coffee	Hot Chocolate
Espresso	Chocomilk
Double Espresso	Espresshoc
Whole Bean Coffee II	Cappuccino I & II
Espresso II	Café au Lait
Double Espresso II	Cafe Latte
Latte Macchiato	+Milk
Customized recipes **	
Chilled [sparkling] water **	Hot water

** optional, ask for details & conditions

Specifications

- MoVeC-ICEq® & USB upload
- 10,4" resolution : 800x600
- User Interface : DJD/Nio
- Menu structure or direct start
- Cleaning pill entrance
- Multiple languages possible
- Cup sensors
- Strength selections menus
- Number selection
- Boiler : 2x 0.4L
- Pressure : max 12 Bar

Canisters



Connections

- 220-240 Volt AC
- 50/60 Hz
- 3350 Watt
- ¾" BSP [15 mm] mains
- waterfilter & waterlock recommended
- USB [outside access]
- LAN

Capacities

	#	Size	Gram	Cups
Whole Bean Coffee I	1	NBC	1100	150
Whole Bean Coffee II	2	NBC	1100	150
Chocolate	3	63	1260	55
Milktopping	4	63	810	160

Waste bucket [accessible from outside] ± 100

Number of cups may vary depending on settings

